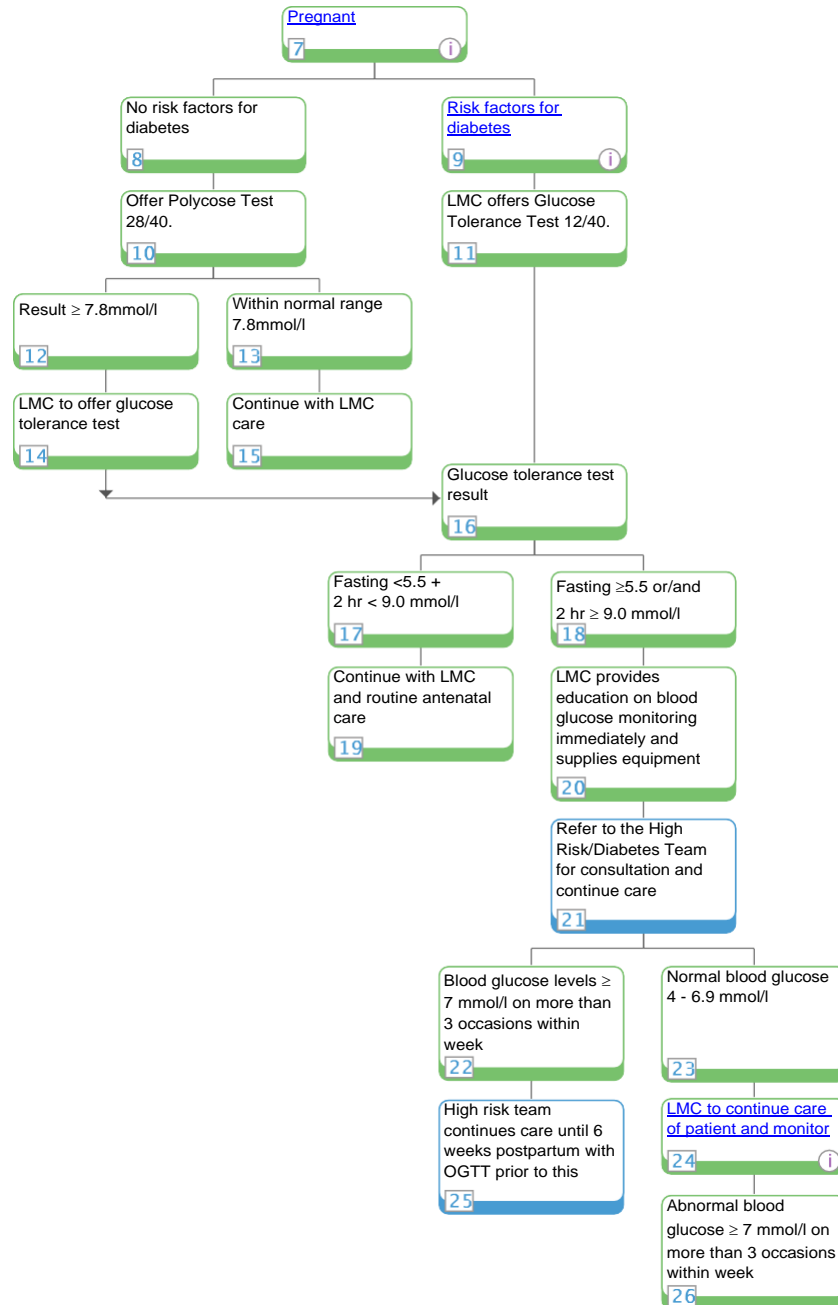


# Diabetes - Pregnancy

Medicine > Endocrinology > Diabetes

- i Information
- R Referral
- N National info
- L Local info
- Note
- Primary care
- Secondary care
- Formulary
- Information

- 1 [Care map information](#)
- 2 [Information resources for patients and carers](#)
- 3 [Updates to this care map](#)
- 4 [Hauora Māori](#)
- 5 [Pasifika](#)
- 6 [PHARMAC Subsidy Rules](#)



## 1. Care map information

### Abbreviations:

- ACE Inhibitor - Angiotensin Converting Enzyme Inhibitor
- ARB - Angiotensin Receptor Blocker
- ARC - Aged Residential Care
- BMI - Body Mass Index
- CHO - Carbohydrate
- DKA - Diabetic ketoacidosis
- eGFR - Estimated Glomerular Filtration Rate
- GI - Glycaemic index
- HbA1c - Glycated haemoglobin
- HHNS - Diabetic hyperosmolar hyperglycaemic non-ketotic syndrome
- MODY - Maturity onset diabetes in youth
- NDNKSF - National Diabetes Nursing Knowledge and Skills Framework
- OGTT - Oral glucose tolerance test.

### References:

See Provenance Certificate for full list of references.

## 2. Information resources for patients and carers

### Te Ara Whānau Ora Brochure

- [Te Ara Whānau Ora Brochure](#)

### Patient version of pathway

- [Patient version of pathway](#)

## 3. Updates to this care map

Date of draft publication: May 2013.

Interim update:

This care map has been updated in line with consideration to evidenced based guidelines.

For further information on contributors and references please see the care map's Provenance.

NB: This information appears on each page of this care map.

## 4. Hauora Māori

Māori are a diverse people and whilst there is no single Māori identity, it is vital practitioners offer culturally appropriate care when working with Māori whānau. It is important for practitioners to have a baseline understanding of the issues surrounding Māori health.

This knowledge can be actualised by (not in any order of priority):

- acknowledging [Te Whare Tapa Wha \(Māori model of health\)](#) when working with Māori whānau
- asking Māori clients if they would like their whānau or significant others to be involved in assessment and treatment
- asking Māori clients about any particular cultural beliefs they or their whānau have that might impact on assessment and treatment of the particular health issue ([Cultural issues](#))
- consider the importance of [whānaungatanga \(making meaningful connections\)](#) with their Māori client / whānau

- knowledge of [Whānau Ora, Te Ara Whānau Ora and referring to Whānau Ora Navigators](#) where appropriate
- having a historical overview of legislation that has impacted on Māori well-being

**For further information:**

- [Hauora Māori](#)
- [Central PHO Maori Health website](#)

## 5. Pasifika

[Pacific Cultural Guidelines \(Central PHO\) 6MB file](#)

**Our Pasifika community:**

- is a diverse and dynamic population:
  - more than 22 nations represented in New Zealand
  - each with their own unique culture, language, history, and health status
  - share many similarities which we have shared with you here in order to help you work with Pasifika patients more effectively

The main Pacific nations in New Zealand are:

- Samoa, Cook Islands, Fiji, Tonga, Niue, Tokelau and Tuvalu

Acknowledging [The FonoFale Model \(pasifika model of health\)](#) when working with Pasifika peoples and families.

Acknowledging general pacific guidelines when working with Pasifika peoples and families:

- [Cultural protocols and greetings](#)
- [Building relationships with your pasifika patients](#)
- [Involving family support, involving religion, during assessments and in the hospital](#)
- [Home visits](#)
- [Contact information](#)

**Pasifika Health Service - Better Health for Pasifika Communities:**

- the Pasifika Health Service is a service provided free of charge for:
  - all Pasifika people living in Manawatu, Horowhenua, Tararua and Otaki who have long term conditions
  - all Pasifika mothers and children aged 0-5 years
- an appointment can be made by the patient, doctor or nurse
- the Pasifika Health Service contact details are:
  - Palmerston North Office - 06 354 9107
  - Horowhenua Office - 06 367 6433
- [Better Health for Pasifika Communities brochure](#)

**Additional resources:**

- Ala Mo'ui - [Pathways to Pacific Health and Wellbeing 2010-2014](#)
- Primary care for pacific people: [a pacific health systems approach](#)
- Tupu Ola Moui: [The Pacific Health Chart Book 2004](#)
- Pacific Health [resources](#)
- [List of local Maori/Pacific Health Providers](#)
- [Central PHO Pacific Health website](#)

## 6. PHARMAC Subsidy Rules

According to the Pharmaceutical Schedule and updates, as of 1 April 2012 the following subsidy rules applied: **Insulin Syringes**

- disposable with attached needle
- maximum of 100 per prescription (prescribed on the same prescription as the one used for the supply of insulin or when prescribed for an insulin patient and the prescription is endorsed accordingly)
- sizes: 0.3mL, 0.5mL and 1mL Gauge: 29g and 31g
- needle size: 12.7mm or 8mm
- subsidised brands: ABM, DM Ject, B-D Ultra Fine

#### **Insulin Pen Needles**

- maximum of 100 per prescription (prescribed on the same prescription as the one used for the supply of insulin or when prescribed for an insulin patient and the prescription is endorsed accordingly) Gauge: 29g, 31g and 32g
- sizes: 12.7mm (29g), 8mm (31g), 6mm (31g), 5mm (31g), 4mm (32g)
- subsidised brands: ABM, B-D Micro Fine, SC Profi-Fine, Fine Ject (Note: Not all of the above brands are available in multiple sizes or gauge).

#### **Blood Glucose Testing**

- maximum of 50 strips per prescription unless:
  - prescribed with insulin or a sulphonylurea on same prescription
  - prescribed on different prescription page from insulin or a sulphonylurea and the prescription is endorsed accordingly
  - prescribed for a pregnant woman with diabetes and prescription is endorsed accordingly

#### **Ketone Testing**

- maximum of 20 strips per prescription
- not available on BSO
- subsidised brands: Optimum Blood Ketone Test Strips

#### **Blood Glucose Meters**

- maximum of 1 meter per prescription
- subsidised for patients who begin insulin or sulphonylurea therapy after March 2005 (or prescribed to a pregnant woman with diabetes)
- only 1 meter per patient (no further prescriptions will be subsidised)
- the prescription must be endorsed accordingly

## 7. Pregnant

All women in pregnancy are offered screening to detect and treat gestational diabetes.

## 9. Risk factors for diabetes

- BMI > 30
- previous baby > 4.5 kg
- previous gestational diabetes
- previous unexplained stillbirth
- primary family history of diabetes
- Māori/ Pacific Islander/Asian

## 24. LMC to continue care of patient and monitor

In labour, follow Diabetes Protocol of Mx in labour - recommend oral glucose tolerance test (OGTT) 6/52 post partum.

# Diabetes

## Provenance Certificate

[Overview](#) | [Editorial methodology](#) | [References](#) | [Contributors](#) | [Disclaimers](#)

### Overview

This document describes the provenance of MidCentral District Health Board's **Diabetes** pathway. This pathway is regularly updated to include new, quality-assessed evidence, and practice-based knowledge from expert clinicians. Please see the Editorial Methodology section of this document for further information.

This localised pathway was last updated in **October 2017**.

For information on changes in the last update, see the information point entitled 'Updates to this care map' on each page of the pathway.

One feature of the "Better, Sooner, More Convenient" (BSMC) Business Case, accepted by the Ministry of Health in 2010, was the development of 33 collaborative clinical pathways (CCP).

The purpose of implementing the CCP Programme in our DHB is to:

- Help meet the Better Sooner More Convenient Business Case aspirational targets, particularly the following:
  - Reduce presentations to the Emergency Department (ED) by 30%
  - Reduce avoidable hospital admissions to Medical Wards and Assessment Treatment and Rehabilitation for over-65-year-olds by 20%
  - Reduce poly-pharmacy in the over-65-year-olds by 10%
- Implement a tool to assist in planning and development of health services across the district, using evidence-based clinical pathways.
- Provide front line clinicians and other key stakeholders with a rapidly accessible check of best practice;
- Enhance partnership processes between primary and secondary health care services across the DHB.

To cite this pathway, use the following format:

Map of Medicine. Medicine. MidCentral District View. Palmerston North: Map of Medicine; 2014 (Issue 1).

### Editorial methodology

This care map was based on high-quality information and known Best Practice guidelines from New Zealand and around the world including Map of medicine editorial methodology. It has been checked by individuals with front-line clinical experience (see Contributors section of this document).

Map of Medicine pathways are constantly updated in response to new evidence. Continuous evidence searching means that pathways can be updated rapidly in response to any change in the information landscape. Indexed and grey literature is monitored for new evidence, and feedback is collected from users year-round. The information is triaged so that important changes to the information landscape are incorporated into the pathways through the quarterly publication cycle.

### References

This care map has been developed according to the Map of Medicine editorial methodology. The content of this care map is based on high-quality guidelines and practice-based knowledge provided by contributors with front-line clinical experience. This localised version of the evidence-based, practice-informed care map has been peer-reviewed by stakeholder groups and the CCP Programme Clinical Lead.

American Diabetes Association Position Statement: Standards of Medical Care in Diabetes – 2017. Diabetes Care, 40 (suppl. 1), S1-S138.
British Cardiac Society, British Hypertension Society, Diabetes UK et al. JBS 2: Joint British Societies' guidelines on prevention of cardiovascular disease in clinical practice. Heart 2005; 91 (Suppl 5): V1-V52.
Contributors representing the Diabetes Collaborative Clinical Pathway Working Group – MidCentral DHB (2013)
Diabetes UK. Evidence-based nutrition guidelines for the prevention and management of diabetes. London: Diabetes UK; 2011.
Drury, P.& Gattling, W. (2005) Diabetes: Your questions answered. Churchill Livingstone UK
Franz, M.J., MacLeod, J., Evert, A. et al. Academy of Nutrition and Dietetics Nutrition Practice Guideline for Type 1 and Type 2 Diabetes in Adults: Systematic Review of Evidence for Medical Nutrition Therapy Effectiveness and Recommendations for Integration into the Nutrition Care Process. J Acad Nutr Diet. 2017. In press. <a href="http://dx.doi.org/10.1016/j.jand.2017.03.022">http://dx.doi.org/10.1016/j.jand.2017.03.022</a>
Hawkes Bay DHB (2012) Diabetes care for Aged residential Care Facilities in Hawkes Bay. Hawkes Bay: New Zealand
Institute for Clinical Systems Improvement (ICSI). Management of type 2 diabetes mellitus in adults. Bloomington, MN: ICSI; 2010.
Kidney Health New Zealand (2010) Chronic Kidney Disease (CKD) Management in General Practice Summary Guide.
MacLeod, J., Franz, M.J., Handu, D., Gradwell, E., Brown, C., Evert, A., Reppert, A., Robinson, M. Academy of Nutrition and Dietetics Nutrition Practice Guideline for Type 1 and Type 2 Diabetes in Adults: Nutrition Intervention Evidence Reviews and Recommendations. J Acad of Nutr Diet. 2017. In press. <a href="http://dx.doi.org/10.1016/j.jand.2017.03.023">http://dx.doi.org/10.1016/j.jand.2017.03.023</a>
MidCentral DHB (2010). Diabetes Care Pathway – Type 1 Diabetes > 18 Years Adapted from Structured Care (3) Diabetes U.K. August 2004.
MidCentral DHB (2010). Diabetes Care Pathway – Type 2 Diabetes Adapted from Structured Care (3) Diabetes U.K. August 2004.
MidCentral DHB (2012) Primary care management of increased creatinine, management of slowly progressing renal Impairment Palmerston North: MidCentral DHB
Ministry of Health. (2013) Food and Nutrition Guidelines for Healthy Older People: A Background Paper. Wellington: Ministry of Health. <a href="http://www.health.govt.nz/publication/food-and-nutrition-guidelines-healthy-older-people-background-paper">http://www.health.govt.nz/publication/food-and-nutrition-guidelines-healthy-older-people-background-paper</a>
Ministry of Health. (2014) Quality Standards for Diabetes Care Toolkit. Wellington: Ministry of Health. <a href="http://www.health.govt.nz/publication/quality-standards-diabetes-care-toolkit-2014">http://www.health.govt.nz/publication/quality-standards-diabetes-care-toolkit-2014</a>
Ministry of Health. (2015) Eating and Activity Guidelines for New Zealand Adults. Wellington: Ministry of Health. <a href="http://www.health.govt.nz/publication/eating-and-activity-guidelines-new-zealand-adults">http://www.health.govt.nz/publication/eating-and-activity-guidelines-new-zealand-adults</a>
National Institute for Health and Clinical Evidence (NICE). Early identification and management of chronic kidney disease in adults in primary and secondary care. Clinical guideline 73. London: NICE; 2008
National Institute for Health and Clinical Excellence (NICE) (2011). Preventing type 2 diabetes: population and community-level interventions in high-risk groups and the general population. Public health guidance 35. London: NICE; 2011.
National Institute for Health and Clinical Excellence (NICE) (Aug 2015). Type 1 diabetes in adults: diagnosis and management. NICE Guideline NG17. (Last updated 2016). London: NICE; 2015.
National Institute for Health and Clinical Excellence (NICE) (Aug 2015). Diabetes (type 1 and type 2) in children and young people: diagnosis and management. NICE Guideline NG18. (Last updated Nov 2016). London: NICE; 2015.
National Institute for Health and Clinical Excellence (NICE) (Aug 2015). Diabetic foot problems: prevention and management. NICE Guideline NG19. (Last updated Jan 2016). London: NICE; 2015.

National Institute for Health and Clinical Excellence (NICE). Behaviour Change: General Approaches. Public Health Guideline PH6. London: NICE, 2007.

National Institute for Health and Clinical Excellence (NICE). Type 2 Diabetes: Prevention in People at High Risk. Public Health Guidelines PH38. London: NICE, 2012.

National Institute for Health and Clinical Excellence (NICE). Type 2 Diabetes in Adults: Management. Clinical Guideline NG28. London: NICE, 2015.

New Zealand Guidelines Group (2012) New Zealand Primary Care Handbook 3rd Edition. Wellington, New Zealand

New Zealand Society for the Study of Diabetes (NZSSD) (2011). Position Statement on the diagnosis of, and screening for, Type 2 Diabetes Updated: September 2011

NSSD (2012). Guide to medicines used in diabetes MidCentral District Health Board: Palmerston North

NZSSD (2011). Summary - screening for type 2 diabetes Available at:  
<http://www.nzssd.org.nz/HbA1c/2.%20NZSSD%20exec%20summary%20diagnosis%20of%20diabetes%20Sept%202011%20final.pdf>

PRODIGY. Diabetes Type 2. Version 2.19. Newcastle upon Tyne: PRODIGY; 2011.

## Contributors

MidCentral DHB's Collaborative Clinical Pathway editors and facilitators worked with clinical stakeholders such as front-line clinicians and pharmacists to gather practice-based knowledge for its care maps.

The following individuals contributed to the update of this care map:

- Dr Stephan Lombard, General Practitioner, Cook Street Health Centre
- Dr Paul Cooper, Medical Director & Clinical Director Acute Care, Central PHO
- Tracey McNeur, Primary Care Nurse Specialist, Long Term Conditions, Kauri HealthCare
- Lois Nikolajenko, Clinical Nurse Specialist, Diabetes & Long Term Conditions (Primary Care Clinical Lead)
- Julie Wells, Clinical Advisor Pharmacist, Central PHO
- Julie Berquist, Clinical Community Nurse Long Term Conditions, Central PHO
- Lynette Law, Clinical Community Nurse, Long Term Conditions, Central PHO
- Dr Helen Snell, Nurse Practitioner, Diabetes and Related Conditions, MCH (Secondary Care Clinical Lead)
- Shelley Mitchell, Diabetes Specialist Dietician, MCH
- Liz Elliott, Clinical Advisor Health of Older People, MidCentral DHB (Editor)

The following individuals contributed to the original development of this care map:

- Dr Alistair Watson, Director, Integrated Care, MDHB (Facilitator)
- Beth McPherson, Clinical Nurse Specialist, Acute Care, Health Care Development (Pathway editor)
- Dr Esther Willis, General Practitioner (Primary care clinical lead)
- Gary Smith, Pharmacist
- Dr Helen Snell, Nurse Practitioner, Diabetes, MidCentral Health (Secondary Care Clinical Lead)
- Lois Nikolajenko, Clinical Nurse Specialist, Diabetes and Long Term Conditions, Health Care development, MDHB
- Michelle McKenzie, Practice Nurse
- Dr Owais Chaudhri, Endocrinologist/Diabetologist, MidCentral Health (Secondary Care Clinical Lead)
- Shirley-Anne Gardiner, Project Director, Health Care Development, MidCentral DHB (Pathway editor)
- Tracey McNeur, Practice Nurse

Other contributors:

- Adrienne Kennedy, Community Clinical Nurse- Long Term Conditions, CPHO
- Alison Fellerhoff, Clinical Nurse Specialist, Diabetes, MidCentral Health
- Bernadette Donaldson, Community Clinical Nurse- Long Term Conditions, CPHO
- Brenda Moana, Outreach Nurse, CPHO
- Dee Rixon, Team Leader, Community Clinical Nurse- Long term Conditions, Central Primary Health Organisation
- (CPHO)
- Jayne Spenceley, Team leader, PHO Dietetic Service
- Lesley Pearce, Manager, Spotless Dietitian Services
- Lisa Cherrington, Maori Health Advisor
- Lynette Law, Community Clinical Nurse- Long Term Conditions, CPHO
- Mataroa Mar, Director, Maori Health, CPHO
- Dr Norman Panlilio, Nephrologist, MidCentral Health
- Dr Paul Dixon, Endocrinologist/Diabetologist, MidCentral Health
- Pauline Giles, Nurse Practitioner, Diabetes, MidCentral Health
- Shelley Mitchell, Diabetes Specialist Dietitian, MidCentral Health
- Syed Zaman (RMO Director/ Geriatrician, MidCentral Health
- Sylvia Meijer, Nurse Practitioner, Older People, Central PHO
- Dr Tim Crowe, General Practitioner

## Disclaimers

### Clinical Board Central PHO, MidCentral DHB

It is not the function of the Clinical Board Central PHO, MidCentral DHB to substitute for the role of the clinician, but to support the clinician in enabling access to know-how and knowledge. Users of the Map of Medicine are therefore urged to use their own professional judgement to ensure that the patient receives the best possible care. Whilst reasonable efforts have been made to ensure the accuracy of the information on this online clinical knowledge resource, we cannot guarantee its correctness and completeness. The information on the Map of Medicine is subject to change and we cannot guarantee that it is up-to-date.